

# Keypad brief instruction

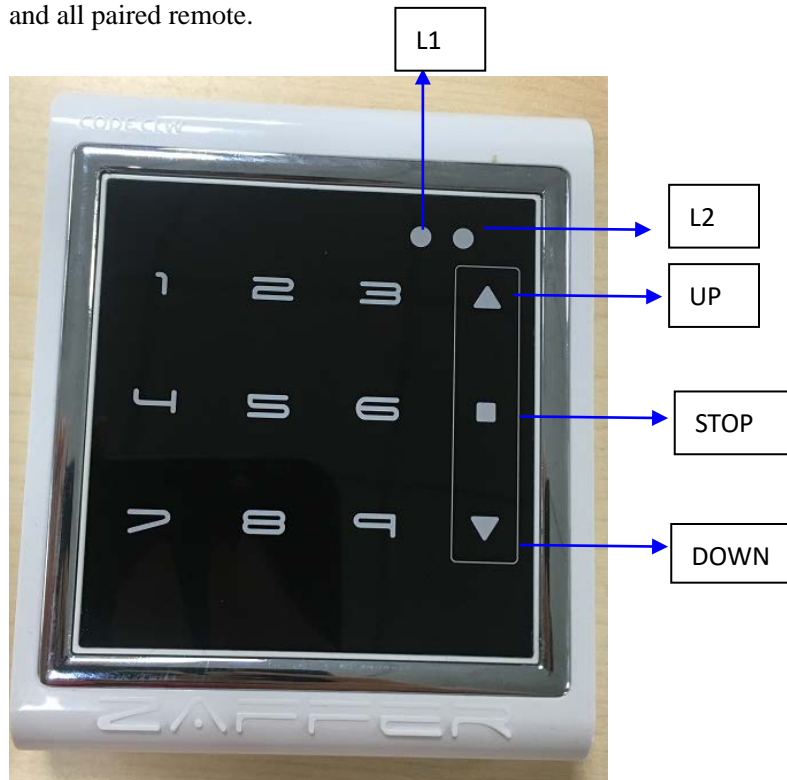
## Technical data:

RF 433.92MHz, rolling code, battery CR2032, compatible with all of Wistar Navigator receivers/radio motors, touch screen

## Function:

Set password, pair to radio motor/receiver, to control motor to run UP/STOP/DOWN.

Other function: set limits, set third limit, delete limits, change running direction, delete current remote and all paired remote.



## Operation:

The keypad gets into sleep mode 5 seconds if no operation is made. To activate the keypad, follow below steps:

1. Touch STOP key for more than 2 seconds till L2 is on.
2. Input password (default is: 1111), L1 state will be changed per each number is inputted.
3. Touch STOP key one time to complete your input, the two indicators L1 and L2 will flash together three times to confirm the password is correct.
4. If the password is incorrect, L1 and L2 will flash alternately. You will need to input correct password again. Make sure L2 is always on during inputting password.

The keypad can only be functioning after above operation. Then you can pair the Keypad to motor. The number 5 is used as program button. For example, pair the key pad to a radio motor:

----- power on the motor, motor jogs.

----- Touch keypad's number 5, the motor jogs again, the keypad is paired to the motor successfully.

For any other operation, when program button is required, just use number 5. The times of pressing program button is same like other Navigator remote. For example, to set limits, program button is required twice, so, for keypad, you touch twice on number 5.