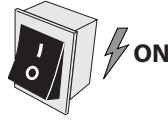


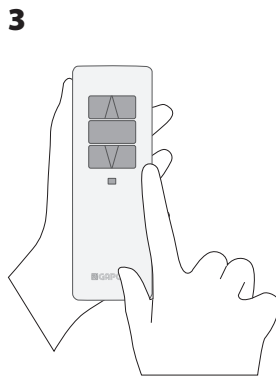
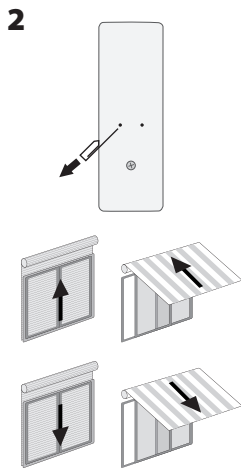
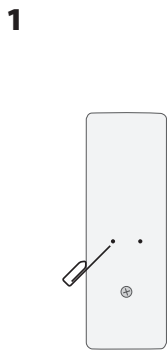
Programming transmitters/channels and setting the limits are made through the buttons shown on the left. According to the type of transmitters (in the drawing the Emitto slim line) the programming buttons (4 and 5) can be differently placed

UP (1) the motor lifts the rolling shade/awning up
STOP (2) the rolling shade/awning stops
DOWN (3) the rolling shade/awning goes down

Prog-TX (4) program the transmitter
Prog-FC (5) set limits



CONNECT POWER TO THE MOTOR



PROGRAMMING A TRANSMITTER

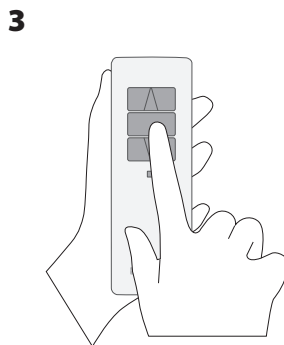
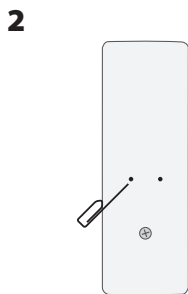
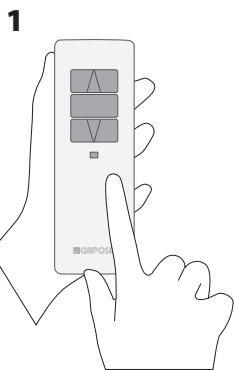
- 1 Press and hold **PROG-TX** button on the back of transmitter till the motor starts moving
- 2 Check the motor rotation then release **PROG-TX** button (the motor stops)
- 3 Within 5 seconds, press the corresponding button (**UP** if the motor turns upwards or **DOWN** if the motor turns downwards)

Transmitter is now programmed

ADDING A NEW TRANSMITTER

- 1 Press and hold **PROG-TX** button on the back of the transmitter already paired till the motor starts moving in one direction
- 2 Release **PROG-TX** button (the motor stops)
- 3 Within 5 seconds, press the corresponding button on the new transmitter being added

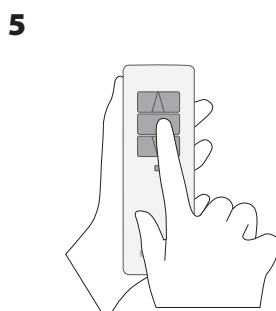
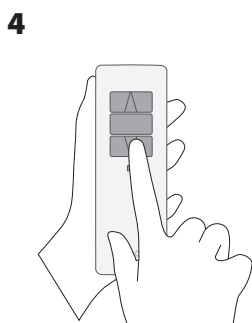
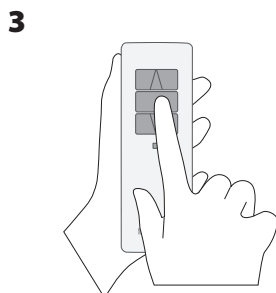
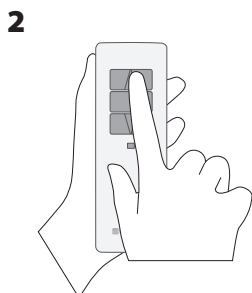
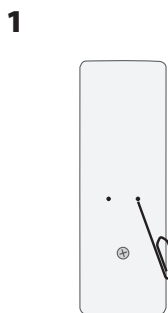
Additional transmitter is now added



CHECKING / CHANGING DIRECTION

- 1 Press **UP** or **DOWN** the motor goes **UP** or **DOWN** accordingly, otherwise to change direction of operation:
- 2 Press and hold **PROG-TX** button on the back of transmitter till the motor starts moving
- 3 Press **STOP**: The motor makes a brief jog. Direction of the motor has been reversed

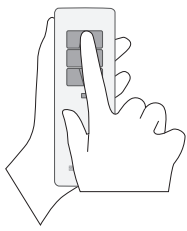
IMPORTANT: the change of direction of operation must be performed before initiating limit setting procedure otherwise limits must be reset



SETTING THE LIMITS

- 1 Press and hold **PROG-FC** button on the back of transmitter till the motor makes a brief jog
Note: during "limit setting mode" the operations are in "deadman control"
- 2 Press and hold the **UP** button and run the motor to the desired **UP** limit position
- 3 Press **STOP** to set the **UP** limit position
The motor makes a brief jog
- 4 Press and hold the **DOWN** button and run the motor to the desired **DOWN** limit position
- 5 Press **STOP** to set the **DOWN** limit position
The motor makes a brief jog

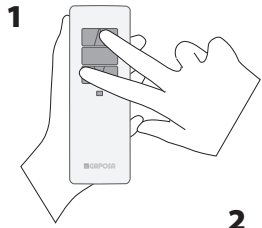
Note> Accurate limit setting can be performed by pressing a second time PROG-FC button: the motor then will reduce its output speed moving slowly in steps towards the desired limit. Always press STOP button to set the limit position
IT IS MANDATORY TO SET ALWAYS THE "UP" LIMIT FIRST



AUTOMATIC SETTING OF THE LIMITS

For limits set with torque sensor (mechanical stop of shutters or cassette awnings/shades), press and hold **UP** button until the bottom bar hits the cassette or shutter box. A short jog will indicate that the **UP** position has been memorized.

The same procedure can be followed for **DOWN** limit but only for roller shutters.

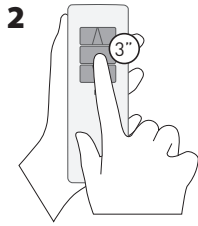


PREFERRED POSITION

1. SETTING AN INTERMEDIATE POSITION

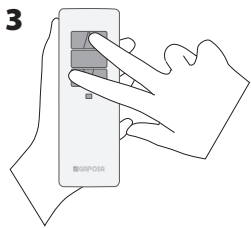
Move the motor and stop it at the desired intermediate position, then press both **UP** and **DOWN** buttons together till the motor makes a brief jog

The intermediate position is set



2. RECALLING THE INTERMEDIATE POSITION

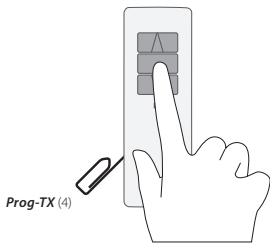
Press and hold the **STOP** button for 3 seconds: the motor will move and stop at the intermediate position



3. ERASING THE INTERMEDIATE POSITION

Press both **UP** and **DOWN** buttons till the motor makes a long jog

The intermediate position has been erased

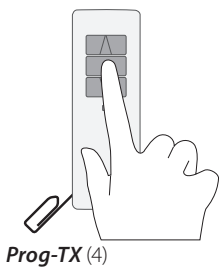


DELETING A TRANSMITTER OR A CHANNEL

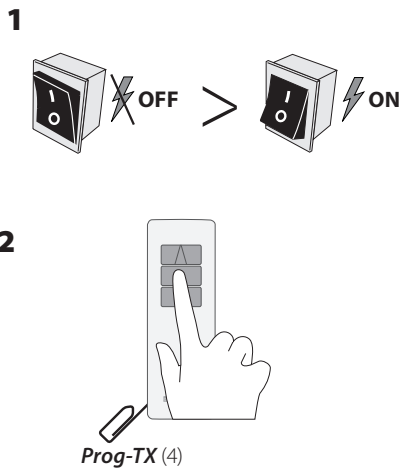
Using the transmitter to be deleted press and hold both **Prog-TX** and **STOP** buttons till the motor makes a small jog

Only the transmitter used for this procedure has been deleted from motor memory

Option 1



Option 2



RESET TRANSMITTER MEMORY (DELETING ALL THE TRANSMITTERS OR CHANNELS OR SENSORS)

Option 1 - Using a programmed transmitter

Press and hold both **Prog-TX** and **STOP** buttons for at least 15 seconds: as confirmation feedbacks the motor makes first a brief jog and after 5 seconds an additional long jog

Memory is now empty

Option 2 - Using a new transmitter without ID (not paired).

1 Switch the motor power supply OFF. Then switch it ON.

2 Within 8 seconds, using any Gaposia transmitter, press and hold both **Prog-TX** and **STOP** buttons until the motor makes a long jog

Memory is now empty

FEEDBACKS LIST:

BRIEF JOG	LONG JOG
Changing direction of the buttons	
Deleting a single transmitter	
Memorize limit positions	Erasing memory (deleting all transmitter/sensors)
Expire of programming mode	
Setting intermediate position	Erasing intermediate position
Activating sun sensor	Deactivating sun sensor
Start the sun-wind sensor testing	Forcing the motor when in "wind alarm status"
	End the sun-wind sensor testing