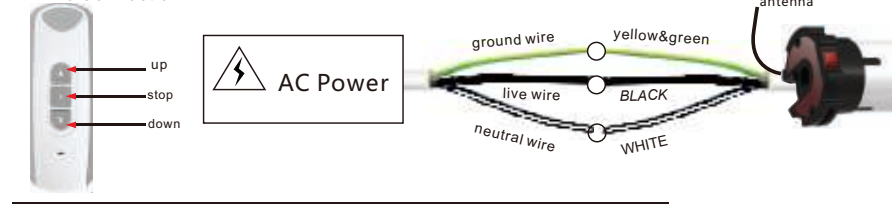


## A Wire Connection



## ! Announcement

1. The RE101 remote has been used as an example here in diagrams. All Alpha remotes are compatible with these motors.
2. Strong local RF levels from other equipment may affect some setup functions. If a step fails, simply repeat the process.
3. Be careful not to speed through the setup process until you are 100% sure of what you are doing.
4. These motors and accessories are not toys, do not allow children to play with them.
5. Ambient operating temperature is: -10 C - +55 C
6. All Alpha products may be subject to change without notice.

## Handy Tips

1. Always roll the blind down and up before setting the top limit. Failure to do so may result in a change of limit position due to a change in blind tension. Simply setting the bottom limit first will prevent this happening.
2. When pressing up and down simultaneously during setup, be as precise as possible. Ideally it should sound like one button click when both are pressed.
3. If you catch yourself making an error during a setup process, stop and allow 10 seconds for the motor to time out, then try again.
4. Do not hold any buttons down during setup process unless specifically told to do so. A half second press should be plenty and allow 1 second between presses.
5. If you are using a multi-channel remote, make certain that it is on the correct channel before you assign it to a motor. This is a common mistake.

## 1 Technical Specifications

Power AC 110v/60Hz

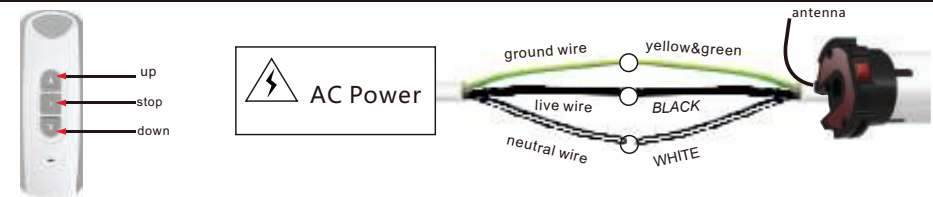
Up to 15 remotes (or channels) may be assigned to each motor

Protection Index: IP 44

Thermal protection will engage after 4 minutes of continuous running

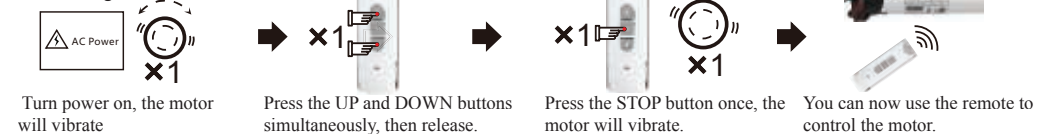
Loaded Power 400w

## 2 Wire Connections

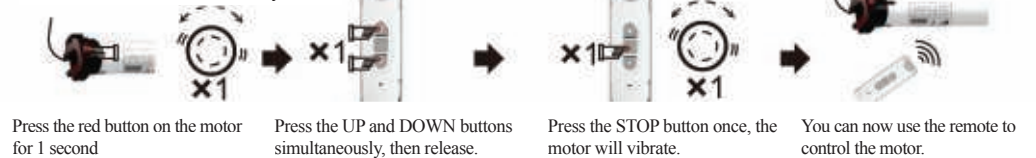


## 3 Assigning a remote to a motor (You have 10 seconds to complete the task)

**Method A.** Only works for the first remote assigned to the motor.

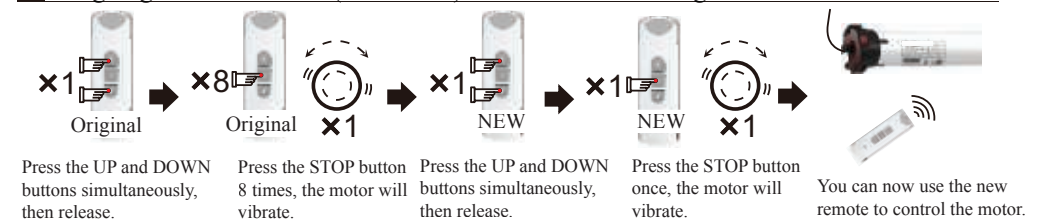


**Method B.** Can be used at any time.



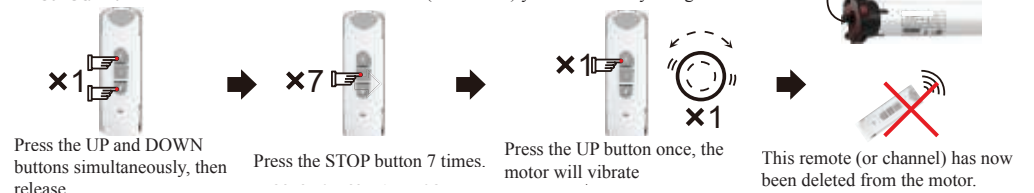
**Method A.** can only be used again if you cut and restore power to the motor 3 times. You must allow 5 seconds before restoring power each time and you must allow the motor to vibrate properly each time. After the third cycle, you may assign the remote.

## 4 Assigning an extra remote (or channel) to a motor via the original remote

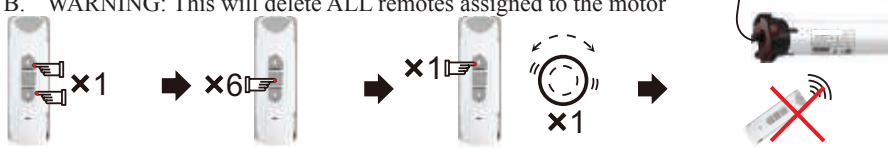


## 5 Deleting a remote (or channel) from a motor (You have 10 seconds to complete the task)

**Method A.** This will delete the individual remote (or channel) you are currently using



Method B. **WARNING:** This will delete ALL remotes assigned to the motor



Press the UP and DOWN buttons simultaneously, then release. Press the stop button 6 times. Press the UP button once, the motor will vibrate. All remotes have been deleted from the motor

## 6 Changing the motor's direction (You have 10 seconds to complete the task)

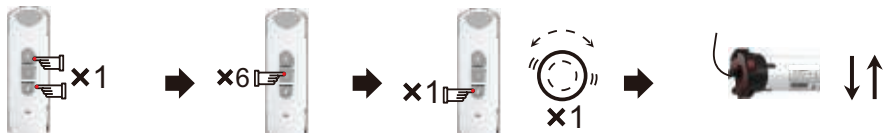
Method A



Hold the red button on the motor down for 3 seconds, The motor will vibrate.

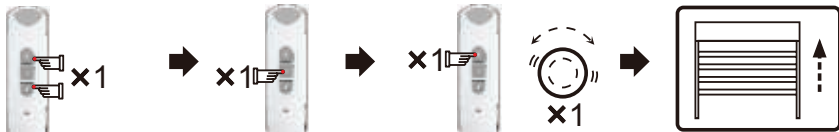
The UP and Down directions of the motor have been reversed.

Method B



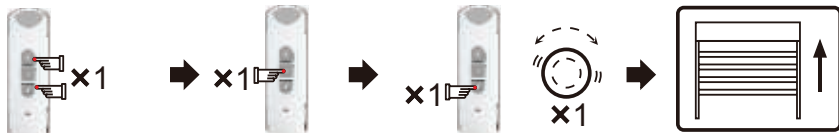
Press the UP and DOWN buttons simultaneously, then release. Press the STOP button 6 times. Press the DOWN button once, the motor will vibrate. The UP and DOWN directions of the motor have been reversed.

## 7 Turn on "step by step" mode (motor moves a few milimeters at a time unless button held down for 3 secs)



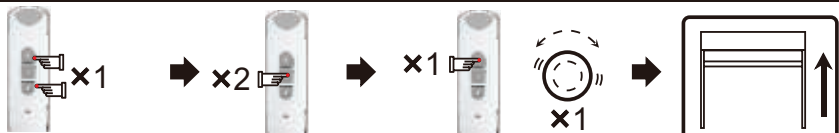
Press the UP and DOWN buttons simultaneously, then release. Press the STOP button once. Press the UP button once, the motor will vibrate. The motor is now in "step by step" mode.

## 8 Turn off "step by step" mode (motor will run up and down as normal)



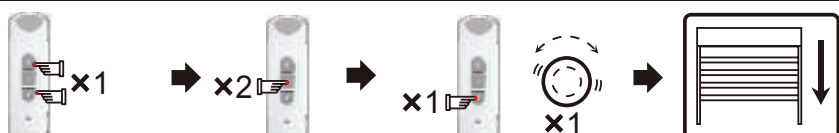
Press the UP and DOWN buttons simultaneously, then release. Press the STOP button once. Press the DOWN button once, the motor will vibrate. The motor will now run normally

## 9 Setting the TOP limit (You have 10 seconds to complete the task)



Press the UP and DOWN buttons simultaneously, then release. Press the STOP button twice. Press the UP button once, the motor will vibrate. Top limit is now set.

## 10 Setting the BOTTOM limit (You have 10 seconds to complete the task)



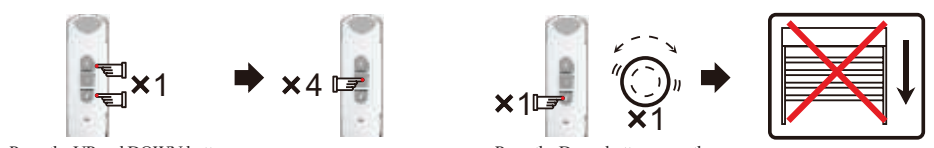
Press the UP and DOWN buttons simultaneously, then release. Press the STOP button twice. Press the DOWN button once, the motor will vibrate. Bottom limit is now set.

## 11 Deleting the Top limit (You have 10 seconds to complete the task)



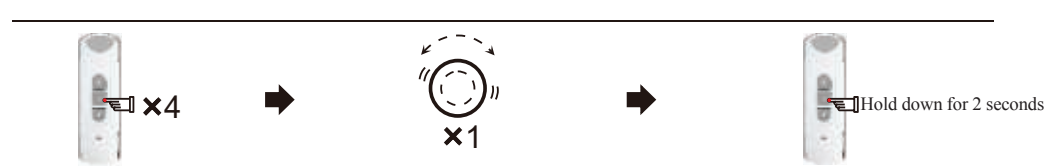
Press the UP and DOWN buttons simultaneously, then release. Press the STOP button 4 times. Press the UP button once, the motor will vibrate. Top limit is deleted

## 12 Deleting the Bottom limit (You have 10 seconds to complete the task)



Press the UP and DOWN buttons simultaneously, then release. Press the STOP button 4 times. Press the Down button once, the motor will vibrate. Bottom limit is deleted

## 13 Setting the third limit (Mid way position, somewhere between top and bottom limits)



Press the STOP button 4 times. The motor will vibrate. Holding down the stop button for 2 seconds will send the motor to the third limit position.

## Changing the third limit



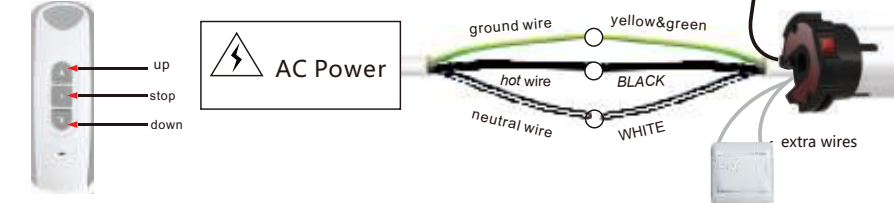
Press the STOP button 4 times. The motor will vibrate. Holding down the stop button for 2 seconds will send the motor to the third limit position.

NOTE: The third limit will be deleted automatically if either the top or bottom limits are deleted.

## 14 Optional Function: working with manual switch

- 1) Single-Control Switch (be compatible with 5-core wires ER tubular motor)

A Wire Connection



B Operation The tubular motor will run Up - Stop - Down - Stop cycle when the switch is pressed each time.

- 2) Dual-Control Switch (be compatible with 6-core wires ER tubular motor)